

Instruction for electrical connection of sundrape® electric vertical blinds

Before installation of the electric drive, all unnecessary wires are to be taken away and existing installations which are not necessary for a use with electric supply are to be deactivated. When mounting electric drives which are operated by touch contact switch, the touch contact switch has to be installed near the system, however at a safety distance to moving parts and above a height of 1,5 m. For drives delivered without moving parts, the reference turning moment and the reference working duration have to be compatible with the characteristics of the running part. Do not exceed the maximum turning moment. In case you need more detailed information, please contact the manufacturer.

Connections and supply lines to be installed at the building-site by authorized electro-firms in compliance with official regulations. In order to avoid backing ups of currents in the condensers of running motors, operate the motors separately. A separate contact for each rotation direction of the motors is required (for decoupling purposes). For controls of more than 2 motors a group control is required. . Control types for sundrape electro blinds:

single

by radio remote control

Cable laying plans and wiring diagrams are submitted on request.

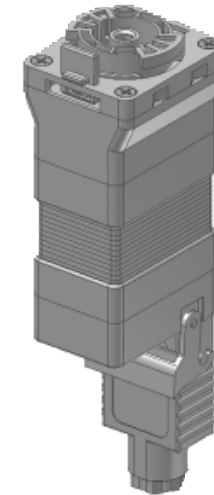
sundrape® TECHNICAL INSTRUCTIONS Electro motor ET25

1. Delivery volume and accessories
2. Fixing on rail profile
3. End positions
4. Connection instructions / technical data
5. Electro installation / cabling

Use with system: 5065 curtain track

1. Delivery volume and accessories

- 1 motor with turning-in flange
- 1 connection coupling TK3, four-polar
- 1 retaining clamp
- 1 motor locking device

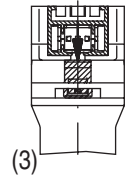
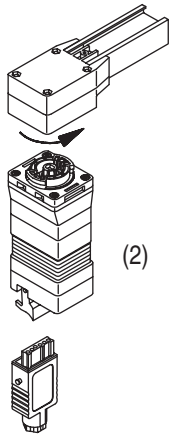
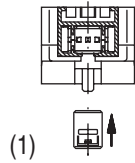


Please read the instructions for use carefully. In case of damages that have been caused by disregard of the instructions for use, the guarantee expires. For consequential damages resulting of it, we do not assume any responsibility.

Subject to technical modifications • 02.2008 • 993 117

Mounting at rail profile

Put motor locking device in the groove of the rail gear (1). Insert motor on rail gear and arrest by a quarter turn (2) (bayonett joint). The plug side should be outside. If the position of the catch pin at the rail gear before insertion does not correspond with motor take-up, this can easily be corrected by slightly shifting the tension bolt. Press the bar downwards until it arrests in the groove of the motor take-up (3). Insert the the ready-cabled connection coupling (4) in the motor and safeguard by means of holding clamp. Now the motor is ready to work.



3. End positions

The motor has no end position switch-off and is activated by touch contact switch. The touch contact switch is to be locked mechanically or electrically. Please bear this in mind when planning the cabling. In operation the drive runner is driven to the blind end when the curtain is closed by pressing the respective touch contact position. In the course of this procedure the drive carrier reaches the end cap. Release the touch contact switch now. It is the same procedure when the drapery is gathered to a stack: pressure on the other touch contact position until the drapery stacks. Then release the touch contact switch. The drapery of a maximum length of 3,500 mm can be opened and closed up to 8 times in series without risking a decrease in performance. In case it happens that the stack position is not reached, the motor has become too warm and needs a brake of abt. 10 minutes. Under normal circumstances the motor does not warm up.

4. Connection instructions

Connections and feed lines are to be installed at the building site by an authorized expert electro firm in accordance with local rules and regula-

tions. Building of groups and connecting with group controls is not possible because of touch contact switch control.

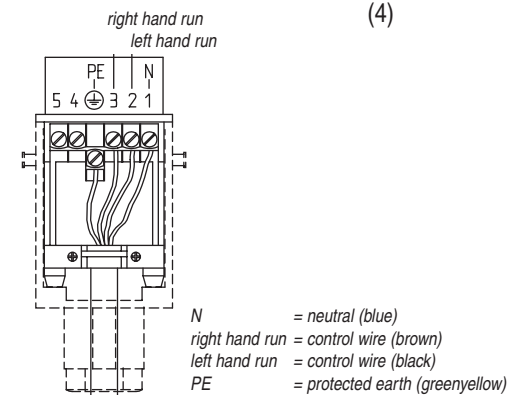
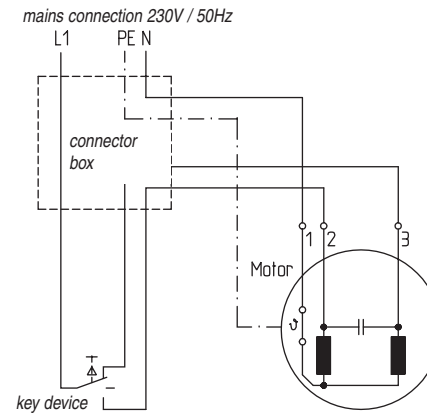
Technical data:

motor:
 rated voltage: 230 V
 rated capacity: 30 W
 nominal current: 0,14 A
 number of cycles: 50 Hz
 class of rating: S3 50 % 4 min
 direction: ri + le

connection coupling:
 type TK3 4-polar
 voltage 250 VAC
 current 10 A
 protective system IP30
 insulation group B

For dry surroundings only.

5. Electro installation/cabling



Attention: Important security advices

To assure the security of persons, it is absolutely necessary to observe these instructions. The instructions have to be filed. Children are not allowed to play with stationary control systems, remote control devices have to be kept away from children.

The system has to be controlled frequently on signs of wear or damaged cables. Wrong mounting may lead to severe injurers. Observe all - mounting instructions – particularly the connection instructions point 4.



Safety instructions

Before starting sundrape® electric motors, group controls and radio remote controls carefully read technical instructions for connexion, mounting and operation.

In case of damages caused by disregarding these instructions, the guarantee expires. For consequential damages we do not assume any responsibility.

Attention – to assure the security of persons and facilities these instructions have to be observed absolutely! File the instructions carefully!

This device is not designed for employees (including kids) with limited physical or mental skills or sensory perception or for persons with a lack of experience or knowledge, unless they are supervised by a person who is responsible for their security or unless they received instructions how to use the device.

Children are not allowed to play with stationary controls and electrical systems. Keep radio remote control devices away from children! Kids should be watched to make sure that they do not play with the device.

The system has to be checked regularly on signs of wear or damaged electrical lines.

Attention – inadequate mounting can cause severe injuries!

Before you start maintenance work on electrical blinds, always cut off power supply. The same applies to window cleaning work, if contact of humidity and cleaning agents with the electrical systems is possible.

Connexion instructions for sundrape® electric motors

Connexions and supply lines have to be passed on site by authorized electricians according to VDE (German Electrical Engineering Association) and local EVU (electric supply company) instructions.

For controls of two and more motors a group control is required. Cable laying plans and wiring diagrams for group and central controls as well as remote controls can be submitted on request. Switch off unused lines and systems before you connect the motor. Place push-buttons above a height of 1,5 m near the system.

Allowed running periods and torques have to correspond with the motor's technical data.

In order to avoid backing ups of condensers of running motors, parallel connexion of two or more motors at one exit is prohibited. For decoupling purposes a separate contact for each direction of rotation is required. Use only mechanically or electrically locked switches and push-buttons. Switches and controls may not permit concurrent up and down operation! The time to change the running direction from up/down to down/up has to be at a minimum of 0,5 seconds. This applies also for programmable control devices.